

# *The University of Virginia*



## **Simplified Business Intelligence**

**Presenter: Rick Seaman, Director  
Financial Information Services**

# What we're going to talk about



- Business Intelligence
- How UVA Finance doing BI
- What UVA Finance is doing with BI
- What results we are we getting

# Definitions

## Business Intelligence

the process of enhancing data into information and then into knowledge

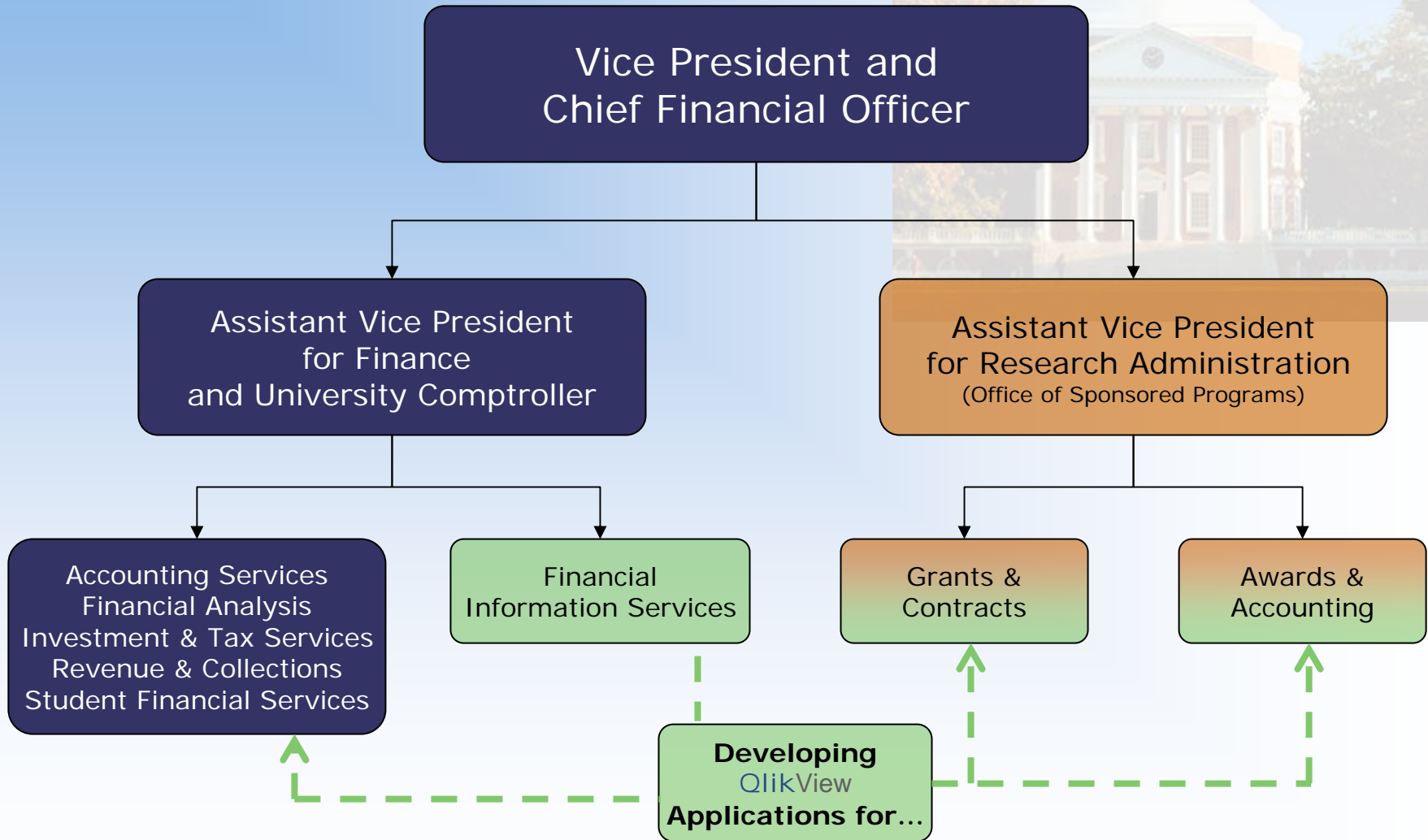
- data mining
- query and reporting
- analytical processing
- decision support
- statistical analysis
- forecasting



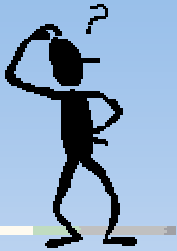
## OLAP (Online Analytical Processing)

the ability to store and access summarized views of business data in multi-dimensional cubes, which are used for reporting, analysis, modeling and planning

# Financial Administration



# The Challenges



- What do we know?
- How do we know it?



Two Primary Areas of Concern:

- Quickly analyze data for completeness & accuracy (Post-Audit)
- Provide a comprehensive data resource for ad hoc queries

# The Criteria



- Rapid development
- Relatively low cost
- Able to be implemented piecemeal
- Highly adaptable to changing requirements
- Low technical skill requirement
- Low training requirement
- Scalable
- Fun to use

# The Solution



 **QlikView Licensed Since 2004**

 **Departments Served**

 **Accounting Services**

 **Fixed Assets**

 **Financial Reporting**

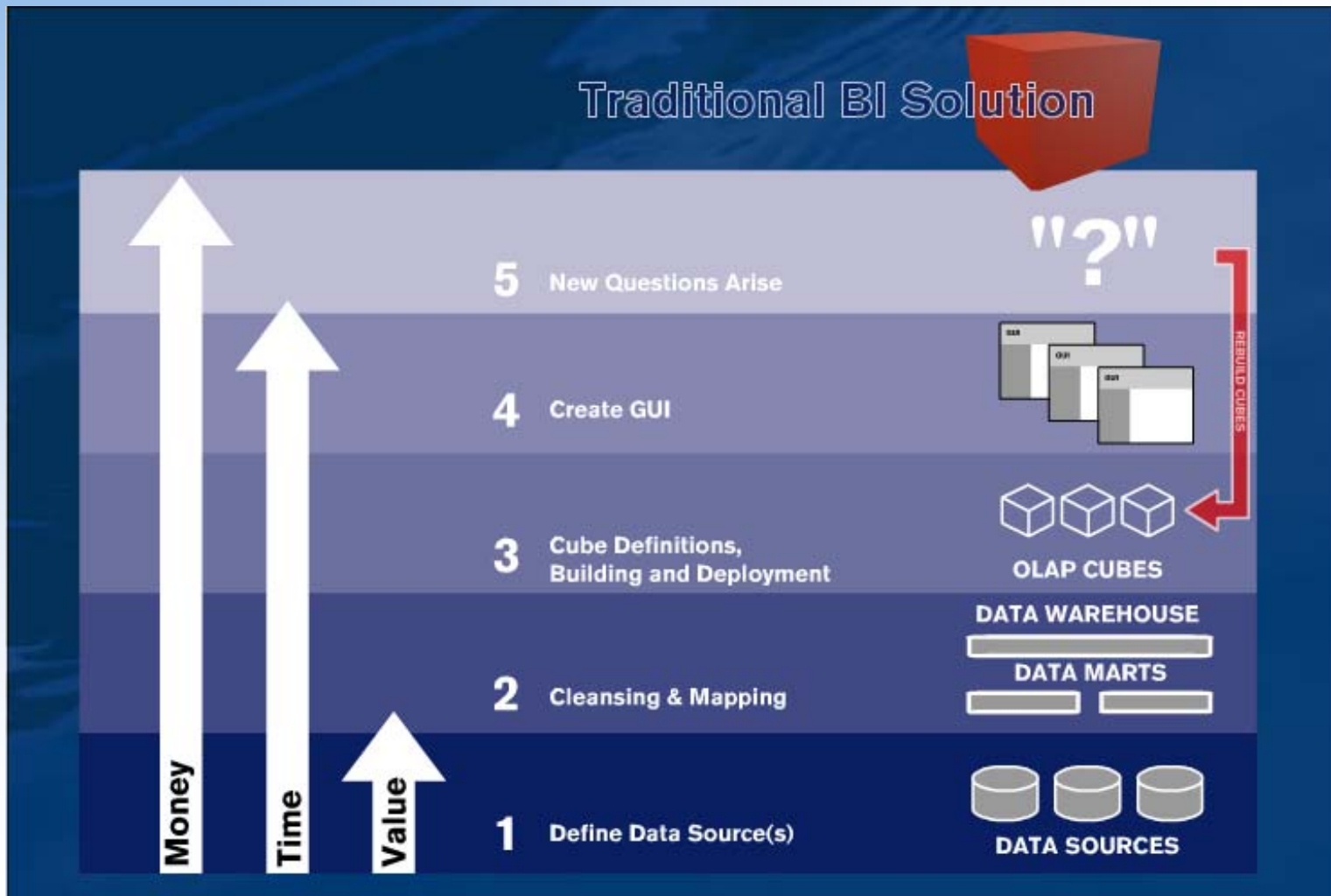
 **Procurement Services**

 **Budget**

 **Grants and Contracts**

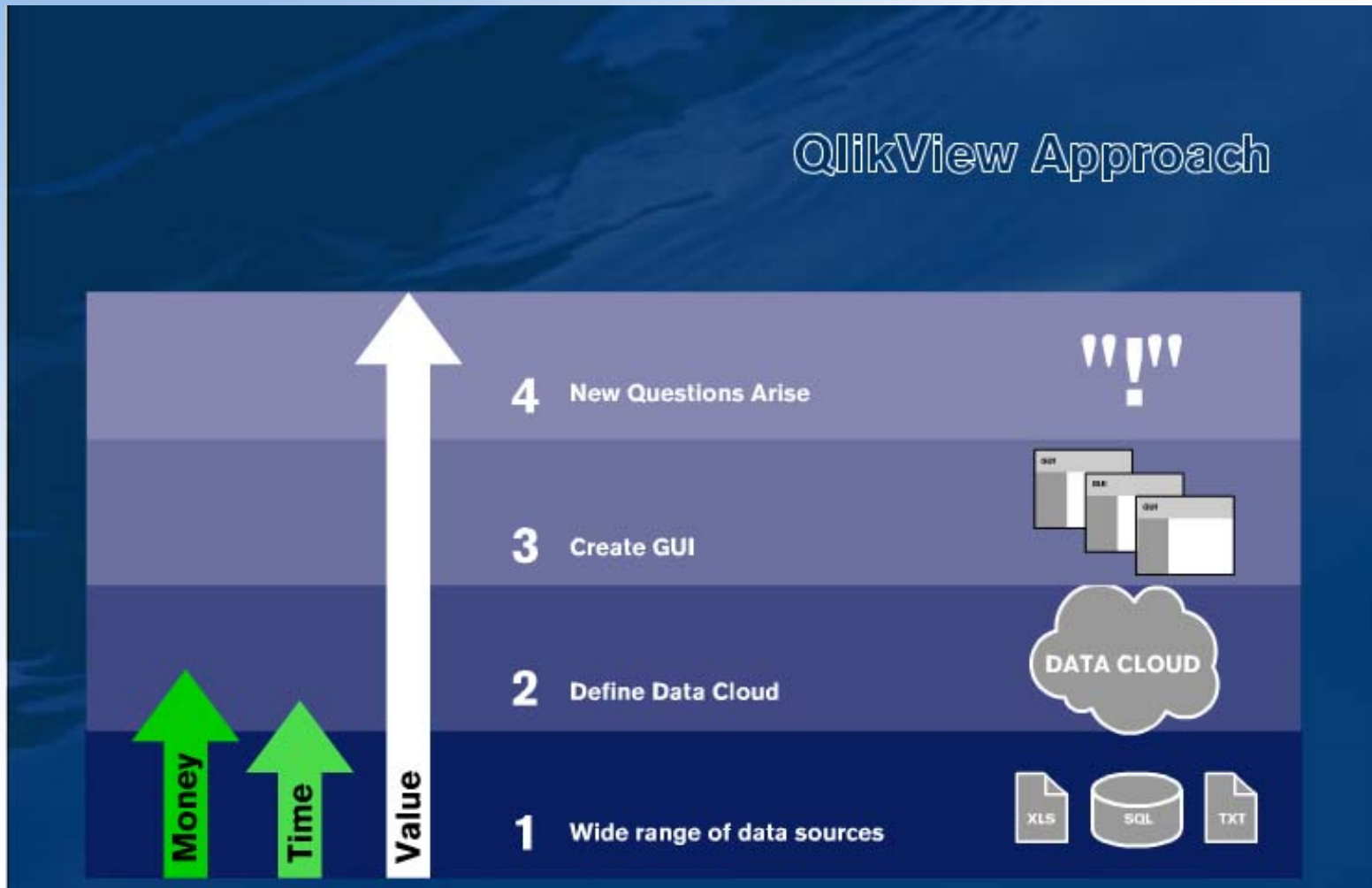
 **Ten Data Analysis Applications**

# To OLAP or Not to OLAP

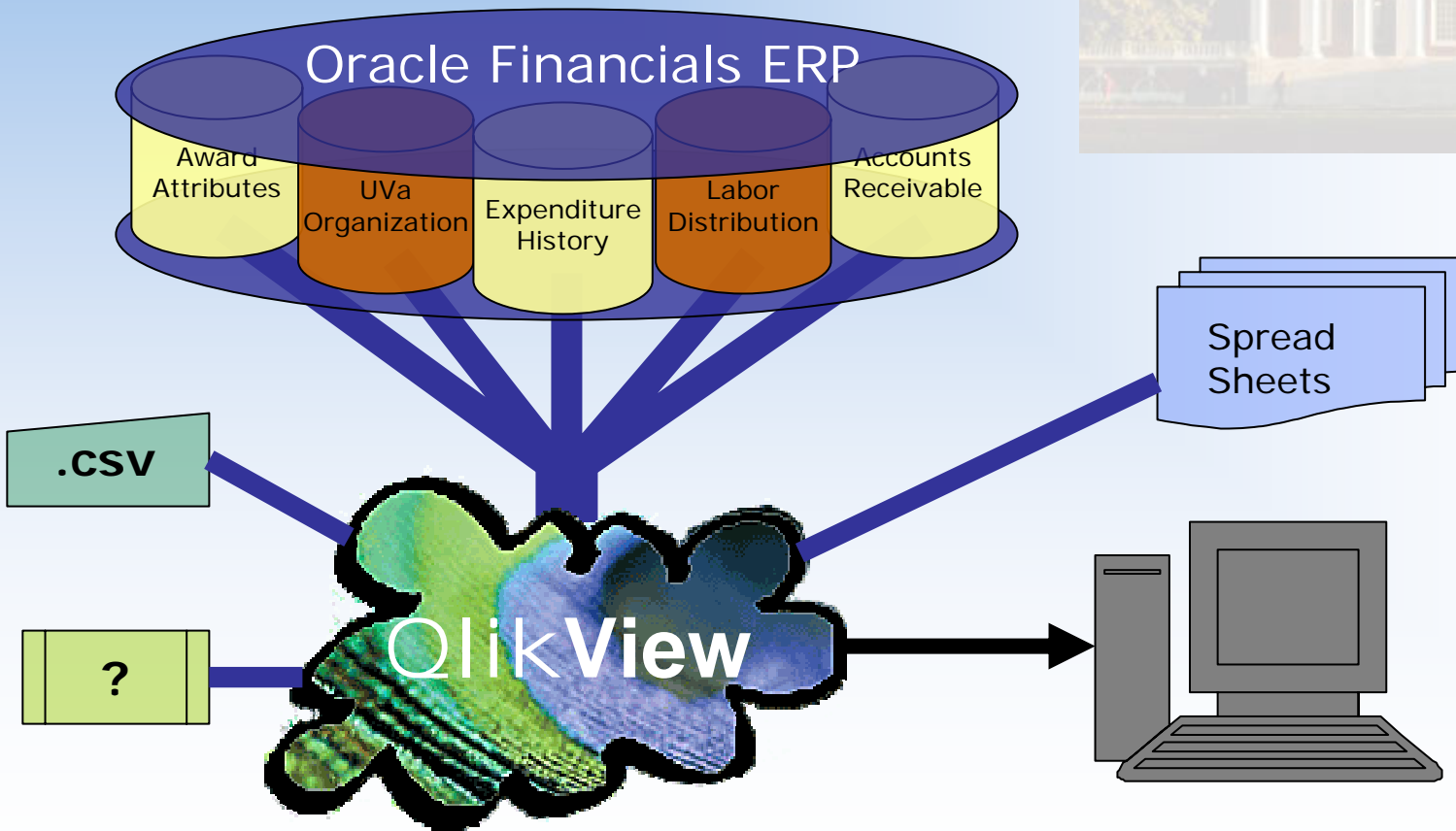


# To OLAP or Not to OLAP

## QlikView Approach



# Financial Data Resources



# What we're going to talk about



- Business Intelligence
- How UVA Finance doing BI
- What UVA Finance is doing with BI
- What results we are we getting

QlikView Enterprise - [C:\Documents and Settings\afs\Desktop\QlikView Apps\Grants Accounting\Sponsored Programs Mar-06.qvw]

File Edit View Selections Layout Settings Bookmarks Reports Object Window Help

Clear Back Forward Lock Unlock

Main Award Attributes Award Financial Reports

### Sponsored Programs Award/Project Analysis

**Awards**

GA10019	EN-SIE-Municipal Sanitation	Active
GA10045	AS-BIOL-Nagy-REU Mt. Lake	Active
GA10047	EN-CS-Appl for Medicine	Active
GA10054	EN-DO-Nanoscale Sciences	Active
GA10056	AS-MATH Normal Subs of GRPS	Active

**Total Budget Statistics**

Total count	2,434
Sum	982,196,140.14
Average	403,531.69
Min	0.00
Max	9,951,283.85

CLEAR ALL

UNLOCK ALL

**Filters**

Status  Active

State Agency

Cust#

Category

Sponsor Type

Sponsor

Award

Award Name

Award Type

Exec Level

Maj Budget Unit

Division

Department

Award Org

PI Name

Award Purpose

CA Sched

F&A Sched

**Total Budget**

Type	Value
GC	530,003,465.58
GF	83,722,072.71
GA	82,004,468.89
GI	80,135,159.87
GG	65,580,868.00
GO	38,570,854.63
GQ	27,604,362.16
GM	26,835,658.11
GS	21,985,735.32
Others	25,753,494.87

Direct Cost  Direct Cost Statistics  Indirect Cost  Indirect Cost Statistics

Refreshed = 4/7/2006

For Help, press F1

4/7/2006 11:21:09 AM

Start Microsoft PowerPoint - [A...] QlikView Enterprise - [...]

9:48 PM

QlikView Enterprise - [C:\Documents and Settings\afs\Desktop\QlikView Apps\Fixed Assets\Assets Mar FY2006.qvw]

File Edit View Selections Layout Settings Bookmarks Reports Object Window Help

Clear Back Forward Lock Unlock

Main Asset Detail Asset FY Activity Reports Change Log

Clear All Unlock All

OWNER	OWNERSHIP	BUILDING	BUILDING NAME	ETF LEASE...	SCHEV
11	SWWHEC Owned	DEFA	310 Old Ivy Way NO	1A	0001
12	UVA GFE	INFR	350 Old Ivy Way NO	2A	0002
13	UVA GOVP	OFF	Abbott Center (Darden)	5A	0003

EXP ENTI...	EXP PROJE	EXP FUND	EXP OBJE	EXP ORG	RESPONSIBLE ORG NAME	COST	EXPENDITURE TYPE
10	100016	1001	7787	10000	10000 PR-President's Office	(751,894.30)	Eq Cap HSF Don-UVA Own
15	100018	1002	8060	10005	10005 PR-Major Events	(212,530.66)	Eq Capital Aircraft
16	100019	1005	8581	10010	10010 PR-Board Office	(171,888.02)	Eq Capital Built-In

MAJOR	MAJOR CATEGORY	MINOR	MINOR CATEGORY	FUNDING PROJE...	FUNDING AWA...	FUNDING ORG
11	Building Fixed Equipment	111	Appliances-Commercial Food	100016	0	3004
21	Building Service	211	Appliances-Domestic	100018	DI00001	10000
31	Building Structures	311	Appliances-Floor Machines	100019	DI00018	10005

ASSET #	DESCRIPTION	MANUFACTURER NAME	PARENT	PARENT ASSET DESCRIPTION
738D3	-86 DEGREE FREEZER	-	0001	Abbott Center (Darden)
7351F	1 CAGE RAT 30 UNIT	1-800-MACOTS/AMAZING	0002	ABBOTT HOUSE #835 - COPELEY HILL: SNAVLE
58257H01	1 CENTRIFUGAL EVAPORATOR	2 NOTE	0006	ABBOTT HOUSE #836 - COPELEY HILL: SNAVLE

IN-SVC MO	IN-SVC YR	RETIRED	RETIRE MO	RETIRE YR	RETIREMENT DESC	INV DATE	INVENTORY TAKER	COMMENTS
Jan	1825	N	Jan	2002	CANNIBALIZED	1980/04/28	Achimescu, Bogdan	1 BLDG RM 462
Feb	1826	Y	Feb	2003	DESTROYED	1994/12/04	Akinola, Oludotun O	1 NORTH
Mar	1830		Mar	2004	DONATED	1995/01/18	Alexander, John A	1 SOUTH

COST	FY BEGIN NBV	FY BEGIN RESERVE	YTD DEPRN	CURRENT RESERVE	CURRENT NBV
Sum 1,697,949,577.29	Sum 966,045,650.79	Sum 818,434,211.98	Sum 46,853,374.92	Sum 864,997,092.61	Sum 935,413,376.64

ASSIGNED COST	ASSIGNED YTD DEPRN	ASSIGNED RESERVE	ASSIGNED NBV
Sum 1,697,949,577.29	Sum 46,853,374.92	Sum 864,997,092.61	Sum 935,413,376.64

Refreshed = 4/7/2006

For Help, press F1

4/7/2006 3:21:59 PM

Start Microsoft PowerPoint - [A... QlikView Enterprise - [...]

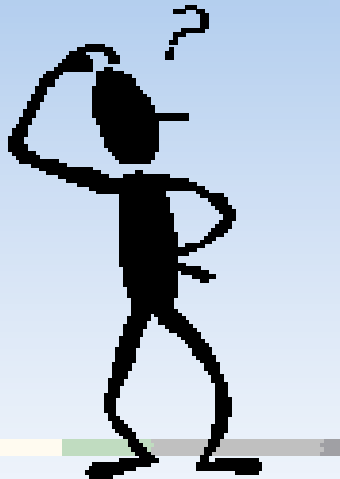
9:49 PM

# The Criteria



- Rapid development
- Relatively low cost
- Able to be implemented piecemeal
- Highly adaptable to changing requirements
- Low technical skill requirement
- Low training requirement
- Scalable
- Fun to use

# Questions



<http://www.qliktech.com>